



101-Atlant Group Ltd AtlantesHouse Company

The Timber Frame Construction (fachwerk) for cottage building.

Company AtlantesHouse offers timber frame construction (fachwerk) from laminated bar for building low-rise buildings and constructions. The laminated bar is executed from saw-timbers from 12 % by humidity of coniferous breeds of wood a fur-tree, a pine of the first second grade. As execution from a larch is possible.

The timber frame construction (fachwerk) can be applied both to building of an apartment house and for a building of public appointment.

Weight of finished articles (a fur-tree, a pine) 0,5 tons/m³.

The timber frame construction **Pluto**, design for cottage building on technology fachwerk.

The offer consists from:

Design fachwerk executed from laminated timber bar (breed of a tree fir-tree, a pine)

Design packing

The instruction on installation

Package of the documentation on the project (paper)

The price of the offer 10200.00 USD

Volume wooden laminated timber bar's details of a design of 10.2 cub. m.

The fixture is not included into the offer price.

Delivery is not included into the offer price.

We offer a timber frame construction from laminated timber bar - fachwerk construction a design for independent assemblage by the customer.

With that that the builder could erect independently a design on the site, and also independently get in the local market all accompanying elements of a box of the house - a bar for a walls and a roof not from laminated timber bar, the wall's material - plate OSB (it is focused-struzhechnaja a plate), heater Rockwool, is cement-struzhechnaja a plate, expanded polystyrene of mark PS 20, a reinforcing grid, fixture for fachwerk designs (carving hairpins and nuts, sanitary screws, washers)

The fixture is not included into the house complete set. Fachwerk the design to fasten with: carving hairpins and nuts, sanitary screws, washers.

Fachwerk the design will roll to make a choice in questions of a choice of a lay-out of the house, a choice of a facade of the house of furnish, colour, windows their size and arrangements.

www.atlanteshouse.com

rus.mail@atlanteshouse.com

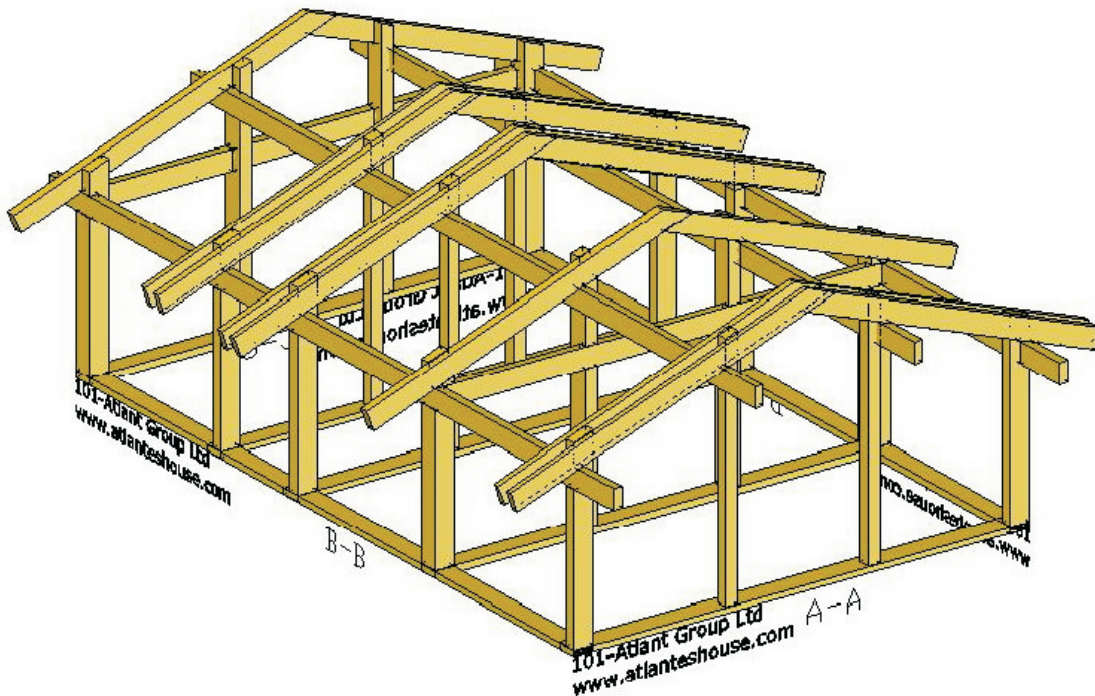
тел. +7921-962-20-11



101-Atlant Group Ltd AtlantesHouse Company

The Timber Frame Construction (fachwerk) for cottage building.

Fachwerk construction for building a timber frame house. Construction consist from 49 details. All details makes from wooden laminated bar, breed of a tree a pine, a fur-tree. Max details length 10.8m, total value 10.3 m³, net weight 5 tn. A 1st floor total area 67 m.sq., the height of ceilings of the 1st floor 3.7m. Performance of the order from the 2 weeks to the 3 months.



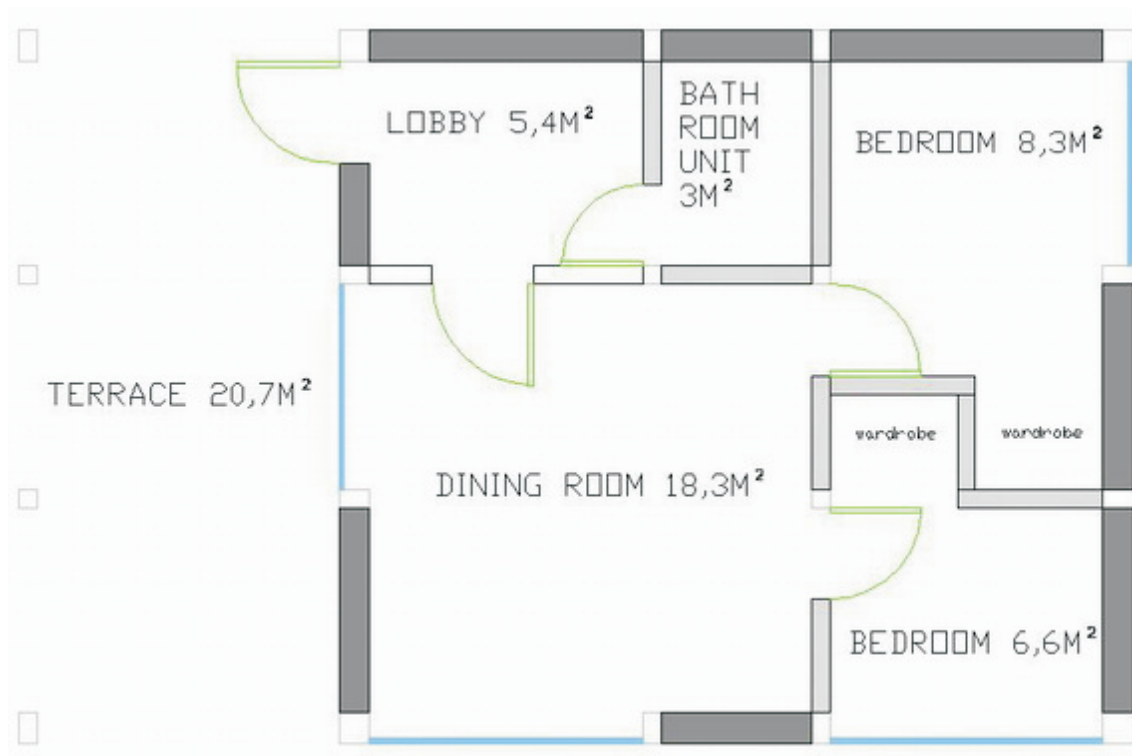
www.atlanteshouse.com
rus.mail@atlanteshouse.com

тел. +7921-962-20-11



The Timber Frame Construction (fachwerk) for cottage building.

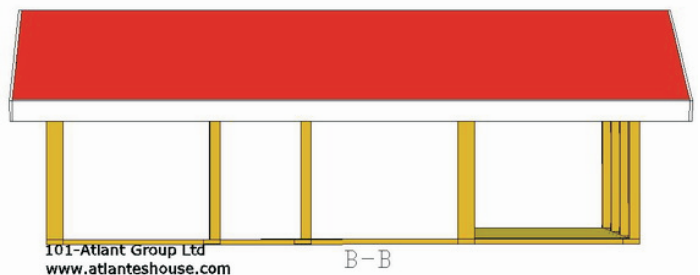
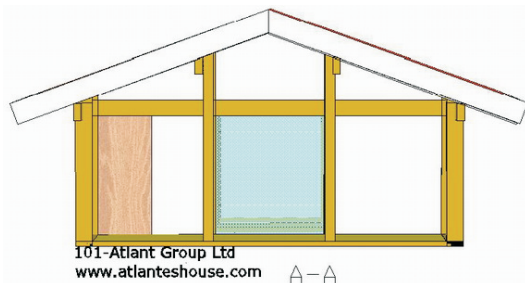
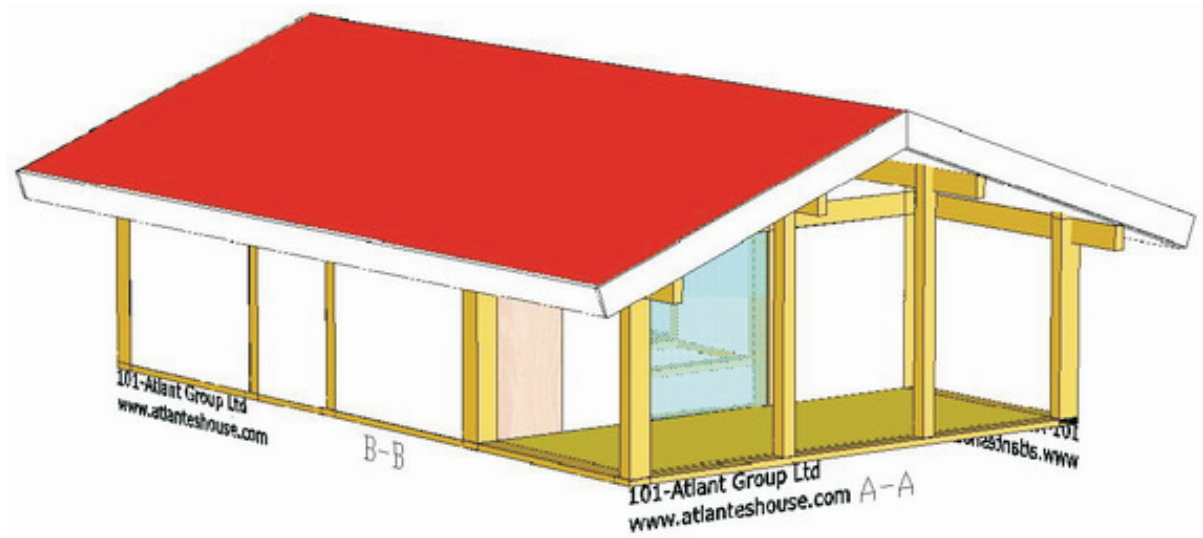
The example of implementation of the plans.





101-Atlant Group Ltd AtlantesHouse Company

The Timber Frame Construction (fachwerk) for cottage building.



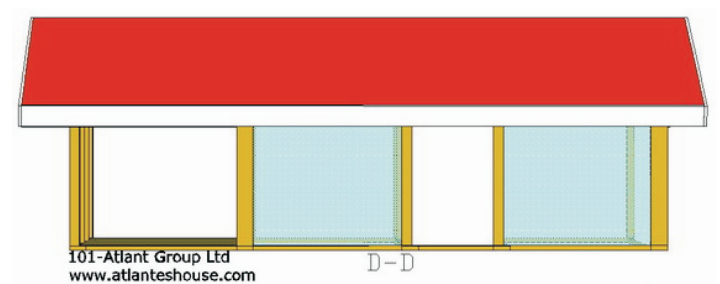
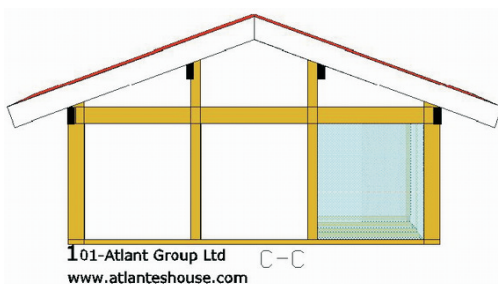
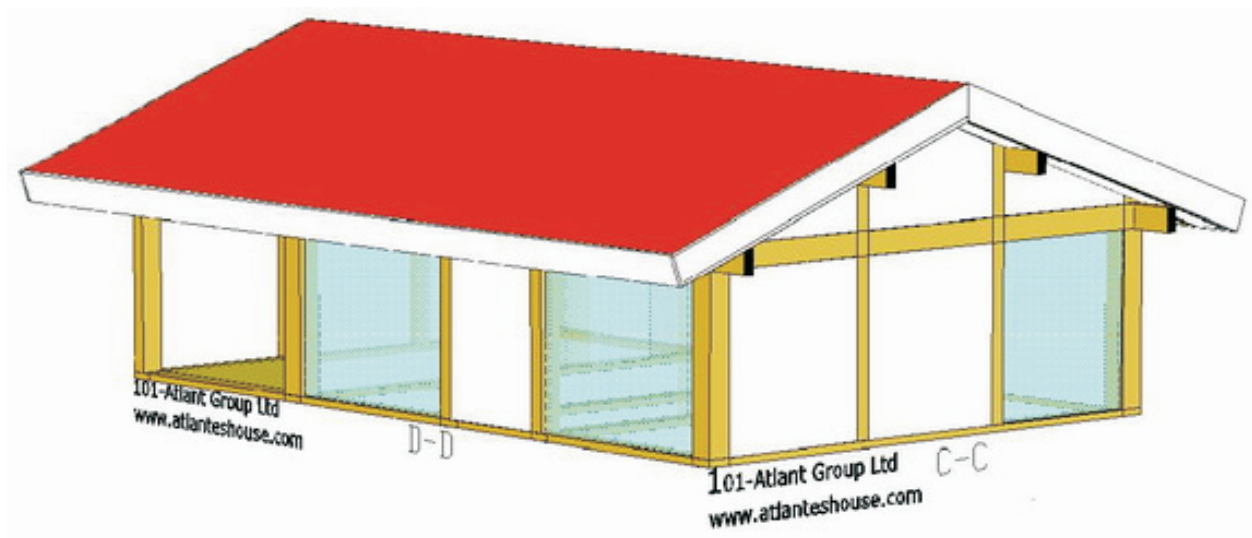
www.atlanteshouse.com
rus.mail@atlanteshouse.com

тел. +7921-962-20-11



101-Atlant Group Ltd
AtlantesHouse Company

The Timber Frame Construction (fachwerk) for cottage building.



www.atlanteshouse.com
rus.mail@atlanteshouse.com

тел. +7921-962-20-11